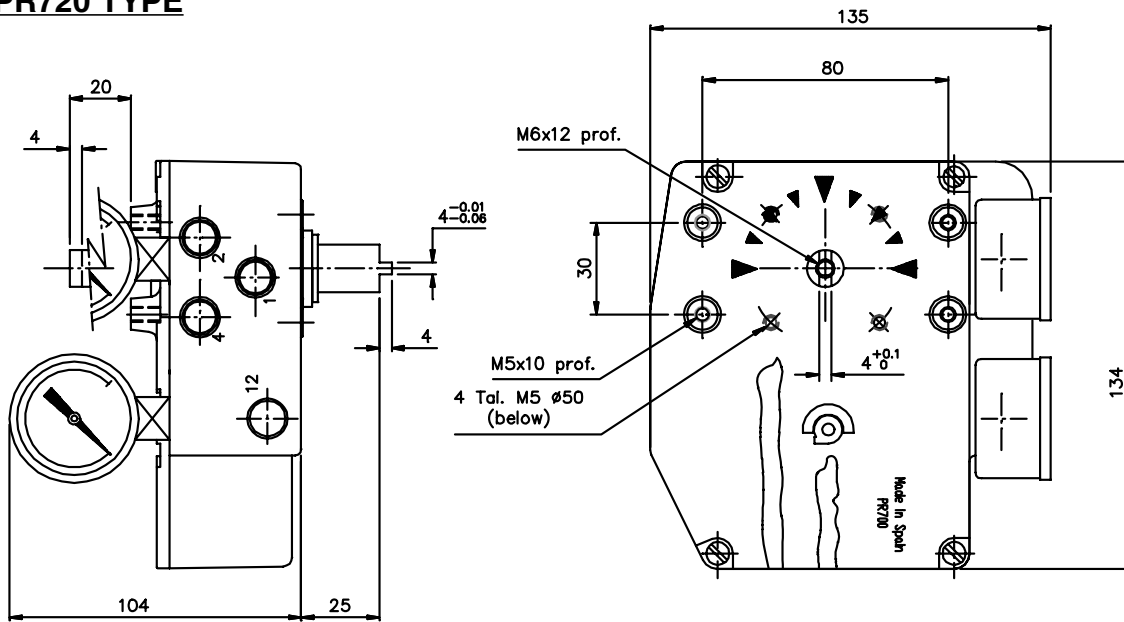


**QUARTER-TURN POSITIONER VALVE
PNEUMATIC CONTROL**

**PR720
SERIES**

PR720 TYPE

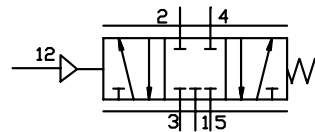


Notes :

Dimensions in mm.
Symbol is according to ISO1219-1.

Description:

Quarter-turn positioner valve, pneumatic control.
(To be mounted see on technical sheet n° E17K0X720).



General Specification:

Repetitivity:	Smaller difference than 0,3% of the full range.
Hysteresis:	Less than 0,5% of the full range.
Linearity:	Better than 99% of the full range.
Sensitivity:	Change of the control signal smaller than 0,5% of the full control range.
Control Signal:	0,2 bar (3psi) to 1 bar (15psi).
Main Air Supply:	Max. 1 MPa.
Nominal flow:	400 NI/min.
Consumed flow:	20 NI/min at 6 bar.
Service temperature:	-10°C to +70°C.
Pneumatic connections:	int. thread G1/4".
Mounting:	according to the industry standard VDI/VDE 3845 (NAMUR).
Compressed air quality:	Control signal according to ISO-8573.1 Class 3.4.3. Supply to the positioner according to ISO-8573.1 Class 3.4.3.

Materials:

Body, box and cover:	Lacqued aluminium alloy.
Valve bushing:	Bronze.
Spool valve:	Treated stainless steel.
Internal parts:	Stainless steel, treated aluminium, bakelite and Brass.
Springs:	Treated stainless steel.
Seals:	Oil resistant nitrilic rubber (NBR).

Options:

- Position indicator/semaphore)
- Inox pressure gauge/without.
- High/Low Flow slider
- Special levers.

Subject to change without notice. Previous data sheets with the issue of the latest data sheets.

VALVE
CONTROL



Nº:
E1700A720

Issued :
12.99