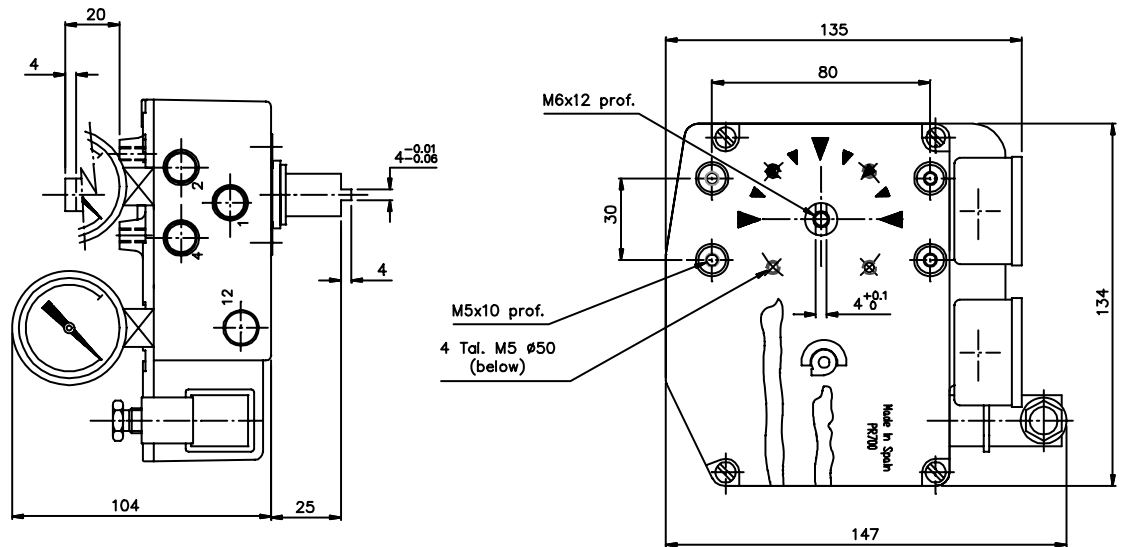


QUARTER-TURN POSITIONER ELECTRONIC
Eex ia IICT6/T5 INTRINSIC SAFETY

PR723
SERIES

PR723 TYPE



Notes :

Dimensions in mm.
 Symbol is according to ISO1219-1.

Description:

Quarter-turn positioner valve, electronic control. Intrinsic safety.
 (To be mounted see on technical sheet n° E17K0X720).

General Specification:

Repetitivity: Smaller difference than 0,3% of the full range.
 Hysteresis: Less than 0,5% of the full range.
 Linearity: Better than 99% of the full range.
 Sensitivity: Change of the control signal smaller than 0,5% of the full control range.

Control signal: 4-20 mA.
 Main air supply: Max. 10 bar.
 Nominal flow Q_N: 400 NI/min.
 Consumed flow: 20 NI/min at 6 bar.
 Service temperature: -10°C to +50°C.
 Circuit impedance: 200 Ω.
 Protection class: IP-65.
 Eex protection class: **Eexia IICT6** (Ii<85mA for Ta<45°C; Ii<100mA for Ta<40°C; Vi<28V.)
Eexia IICT5 (Ii<200mA for Ta<70°C; Vi<28V.)

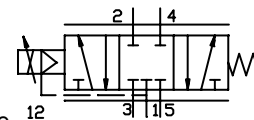
Pneumatic connections: int. thread G1/4".
 Mounting: according to the industry standard VDI/VDE 3845 (NAMUR).
 Compressed air quality: Supply to the positioner according to ISO-8573.1 Class 2.4.3.

Materials:

Body, box and cover: Lacqued aluminium alloy.
 Valve bushing: Bronze.
 Spool valve: Treated stainless steel.
 Internal parts: Stainless steel, treated aluminium, bakelite and brass.
 Springs: Treated stainless steel.
 Seals: Oil resistant nitrilic rubber (NBR).

Options:

- Electrical connection PG, NPT, M.
- Position indicator.
- Stainless steel pressure gauge/without pressure gauge.
- High/Low Flow spool valve.
- Special cams.



Subject to change without notice. Previous data sheets with the issue of the latest data sheets.

VALVE
 CONTROL



N°:
E1700A723

Issued :
12.99