

D Series



CARACTERISTICS

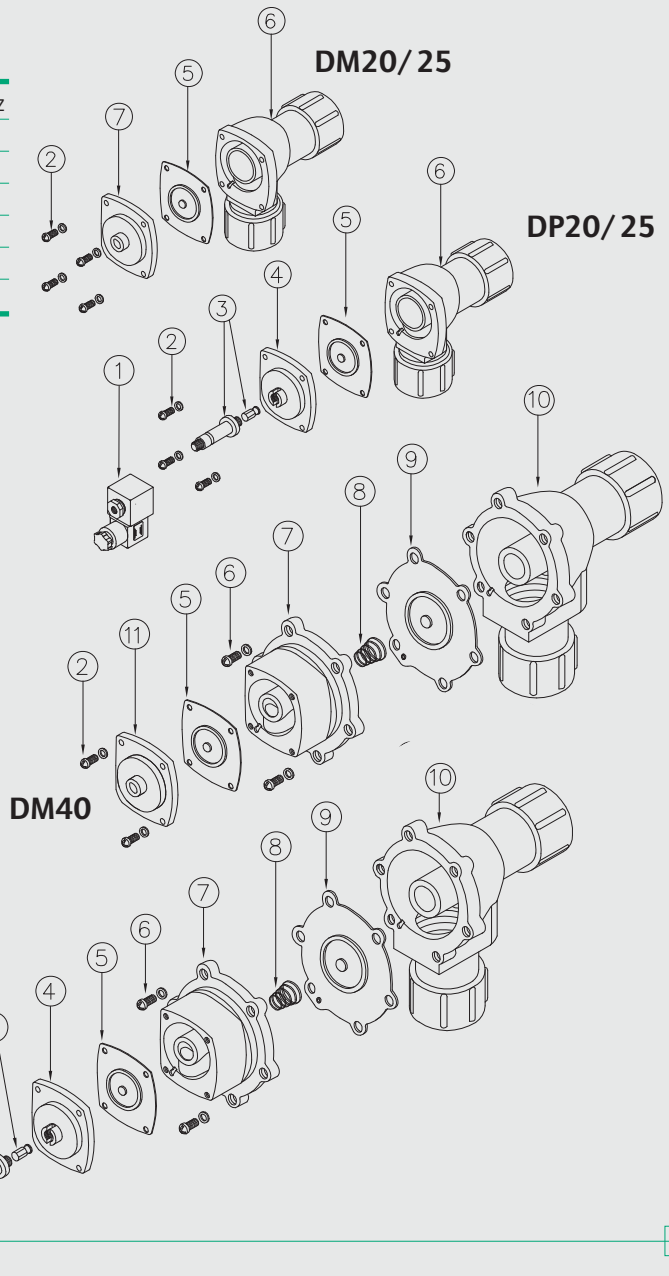
Fluid	Filtered and oilfree compressed air
Temperature range	STD diaphragm -40°C; +80°C Viton diaphragm -30°C; +200°C
Operating pressure	min. 0,5; max 7,5 bar
Body e coover	Die cast aluminium
Core tube	Stainless Steel
Plunger	Stainless Steel
Screws	Stainless Steel
Coil insulation	Class H
Connector	PG 9; IP65 DIN 43650 ISO 4400
Standard voltages	230 -110 - 24V / 50-60VHz 19 VA 24VDC 15W

DESCRIPTION	DP/ DM20	DP/ DM25
1 Coil+Connector	BH10...V/50-60Hz	BH10...V/50-60Hz
2 Screws+Washer	VTE6x20+VROS6	VTE6x20+VROS6
3 Pole assembly	GPC 10	GPC 10
4 Cover	TCOP 25	TCOP 25
5 Diaphragm	M20	M25
6 Body	TCOR20/25MMG	TCOR25MMG
7 Cover remote operated	TCOP25FM	TCOP25FM

DP Integral solenoid pilot version
DM Remote pilot version

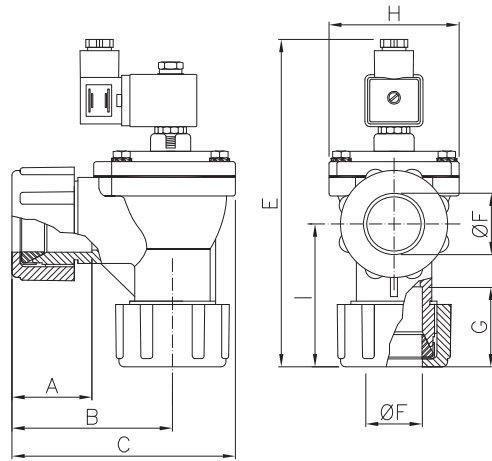
DESCRIPTION	DP/ DM40
1 Coil+Connector	BH10...V/50-60Hz
2 Screws+Washer	VTE6x20+VROS6
3 Pole assembly	GPC 10
4 Cover	TCOP 25
4 Remote cover	TCOP25FM
5 Diaphragm	M25
6 Screws + Washer	VTE8x20+VROS8
7 Main cover	TCOP 40N
8 Spring	TMOL40
9 Main diaphragm	M40
10Body	TCOR40MMG
11Cover remote operated	TCOP25FM

DP Integral solenoid pilot version
DM Remote pilot version

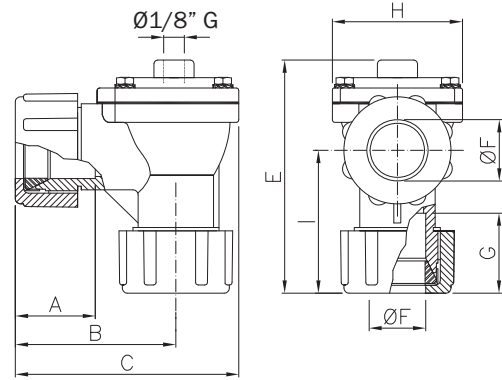


Dimensions mm **D** Series

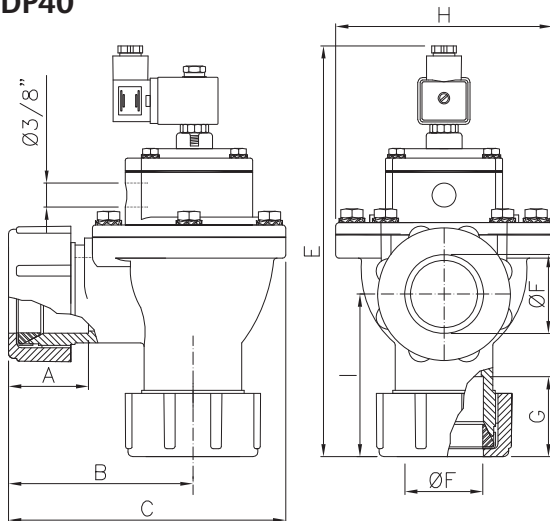
DP20 - DP25



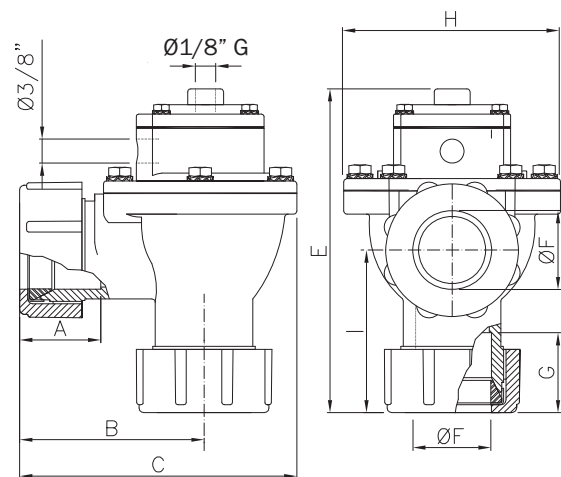
DM20 - DM25



DP40

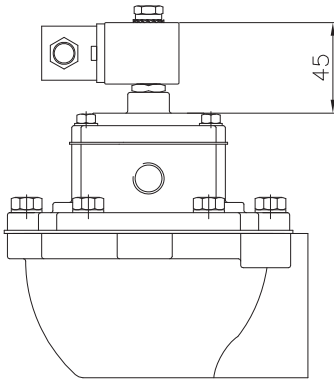


DM40



Model	Ø(nom)	A	B	C	E	F	G	H	I	L	Weight (Kg)	Model	E	Weight (Kg)
DP 20	3/4"	48	90	128	~189	28,5	48	74	80	30,5	1,1	DM 20	131	1
DP 25	1"	48	90	128	~189	35	48	74	80	30,5	1	DM 25	131	0,9
DP 40	1 1/2"	66	114	180	~264	50	66	140	101	39	2,4	DM 40	206	2,3

ATEX

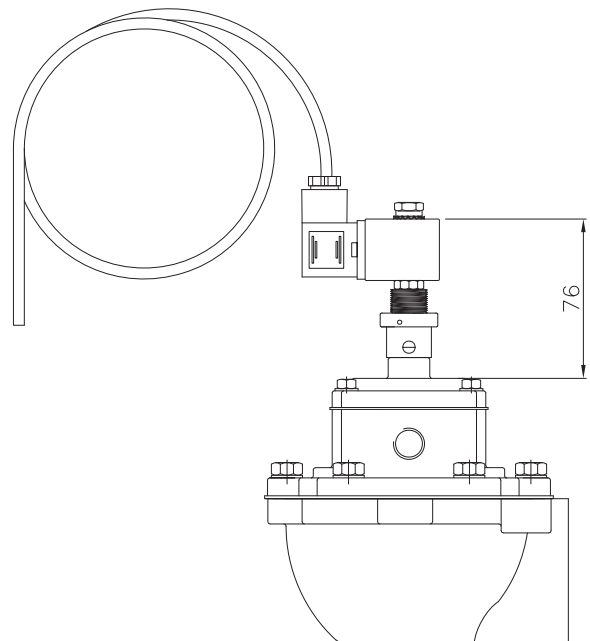


ATEX II3GD (zone 2 e 22)

Turbo pulse valves for potentially explosive atmospheres according to ATEX 94/9/EC valve is provided with moulded coil and connector IP 65 suitable for zone 2 e 22. Valve dimensions are same of standard model.



Turbo pulse valves for potentially explosive atmospheres according to ATEX 94/9/EC. Valve use encapsulated moulded soil with leads wire of different length. Pilot valve has brass body that change valve dimensions from standard model.



ATEX II2GD (zone 1 e 21)

ATEX 94/9/EC

Correspondence between zones and categories

Group I (underground mining, methane and combustible dust)		Group II (Surface, gas/air or mixture of dust/air, vapors)					
Category M		Category 1		Category 2		Category 3	
1	2	G (Gases, Mists vapors Zone 0)	D (Dust Zone 20)	G (Gases, mists vapors Zone 1)	D (Dust Zone 21)	G (Gases, mists vapors Zone 2)	D (Dust Zone 22)
Equipments ensuring a very high level of protection. Guaranteed operations in case of possible errors		Equipments ensuring a high level of protection. Equipments ensuring a very high level of protection. Explosive atmospheres are present continuously, for long period or frequently.		Equipments ensuring a high level of protection. Explosive atmospheres are likely to occur.		Equipments ensuring a normal level of protection. Explosive atmospheres are unlikely to occur or, if they do occur, are likely to do so only infrequently and for a short period only.	

HOW TO ORDER

example

F P 25 02450

F : THREADED VALVE
D : COMPRESSION FITTINGS VALVE
E : FLANGED VALVE
SQ : GLOBAL VALVE FOR SQUARE TANK
FD : STRAIGHT THROUGH VALVE

P = INTEGRAL PILOT
M = REMOTE PILOT

CONNECTION DIAMETERS

$3/4''$ = 20
1'' = 25
 $1''1/2$ = 40
2'' = 55
 $2''1/2$ = 65
3'' = 75

STANDARD VOLTAGES

24V 50-60Hz = 02450
110V 50-60Hz = 11050
220V 50-60Hz = 22050
24VDC = 024DC