

## Accessories

### Pressure Gauge Syphons

DIN 16 282 or industrial standard



### Application

Pressure gauge syphons are intended to protect the pressure gauge from the effect of hot pressure media such as steam and also to reduce the effect of rapid pressure surges. Condensate of the pressure medium that is collected inside the coiled or U-shaped portion of the syphon prevents direct contact. When first installed the syphon should be filled with water or any other suitable separating liquid.

### Form

U-form to fit horizontal pressure tap

Trumpet form to fit vertical pressure tap

### Material

Carbon steel ( St35.8 )

Stainless steel ( 1.4571 )

### Options / Measuring ranges

Thread other than G $\frac{1}{2}$

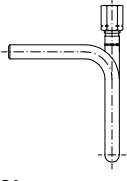
Special steel alloy

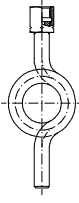
Testing certificates 3.1

Stainless steel 1.4571 degreased for oxygen

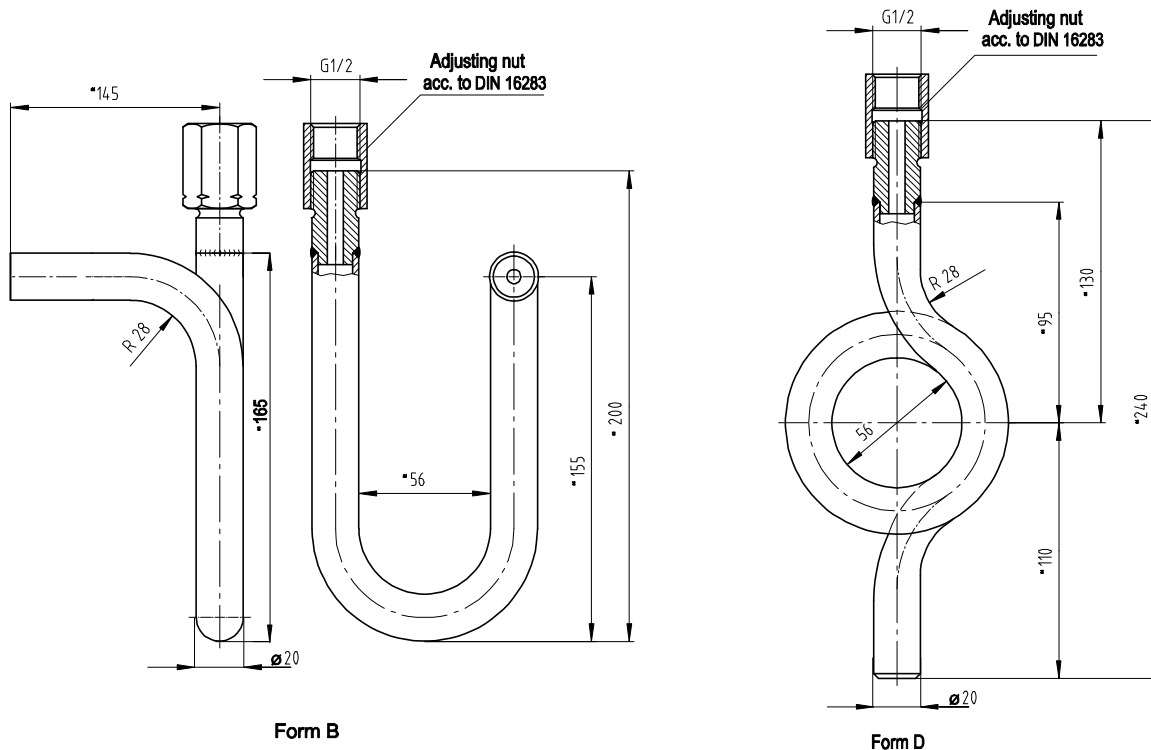
**Model: A1305**

## Design per DIN 16 282

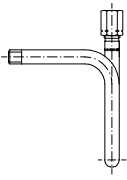
| Design   | Max. temperature °C | Max. PN [bar] | Material | Article no.  |
|--|---------------------|---------------|----------|--------------|
| <b>U-Form</b><br> |                     |               |          |              |
| <b>Gauge side:</b><br>LH/RH union G $\frac{1}{2}$  |                     |               |          |              |
| <b>Form B</b><br>Entry butt welding  | 120                 | 100           | St 35.8  | A1305X010003 |
|  | 300                 | 80            |          |              |
|  | 400                 | 63            |          |              |
|  |                     |               | 1.4571   | A1305X010004 |


| Design   | Max. temperature °C | Max. PN [bar] | Material   | Article no.  |
|--|---------------------|---------------|------------|--------------|
| <b>Trumpet form</b><br> |                     |               |            |              |
| <b>Gauge side:</b><br>LH/RH union G $\frac{1}{2}$  |                     |               |            |              |
| <b>Form D</b><br>Entry butt welding  | 120                 | 100           | St 35.8    | A1305X020003 |
|  | 300                 | 80            |            |              |
|  | 400                 | 63            |            |              |
|  |                     |               | Sst 1.4571 | A1305X020004 |

## Dimensions [mm]

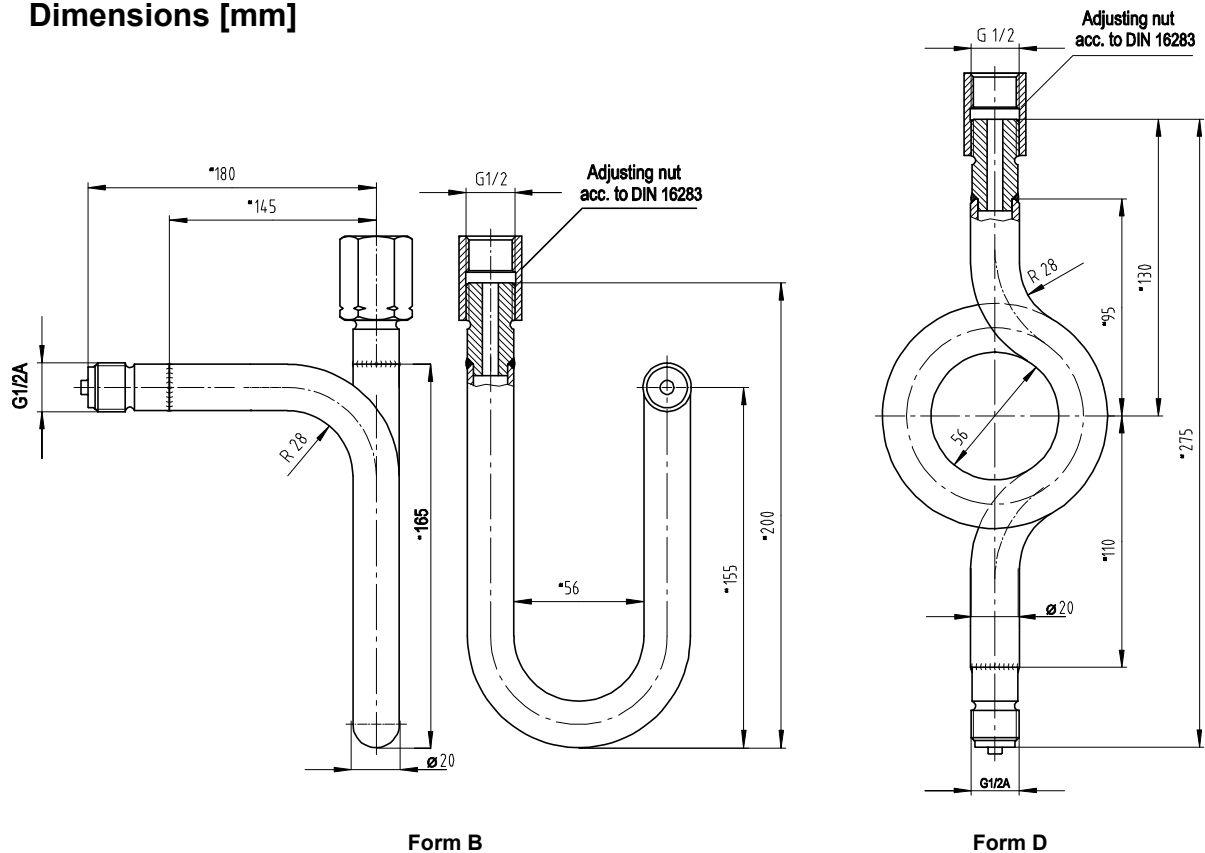


## Execution similarly DIN but with connecting thread


| Design<br>U-Form   | Max. temperature<br>°C | Max. PN<br>[bar] | Material   | Article no.  |
|--|------------------------|------------------|------------|--------------|
| <br><b>Gauge side:</b><br>LH/ RH union G½ | 120                    | 100              | St 35.8    | A1305X010001 |
|  | 300                    | 80               | Sst 1.4571 | A1305X010002 |
|  | 400                    | 63               |            |              |

| Design<br>Trumpet form   | Max. temperature<br>°C | Max. PN<br>[bar] | Material   | Article no.  |
|--|------------------------|------------------|------------|--------------|
| <br><b>Gauge side:</b><br>LH/ RH union G½ | 120                    | 100              | St 35.8    | A1305X020001 |
|  | 300                    | 80               | Sst 1.4571 | A1305X020002 |
|  | 400                    | 63               |            |              |

## Dimensions [mm]



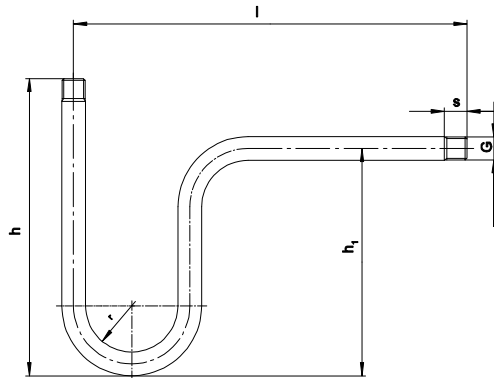
## Industrial standard design


| Design<br>U-Form<br> | Connection thread |                    | Max. PN<br>[bar] | Material | Dimensions [mm] |     |     |      |    | Article no.  |
|---|-------------------|--------------------|------------------|----------|-----------------|-----|-----|------|----|--------------|
|   | Entry             | Gauge side         |                  |          | h               | h1  | l   | r    | s  |              |
| Both side male<br>pipe thread   | G $\frac{1}{4}$   | G $\frac{1}{4}$    | 25               | St 35.8  | 170             | 130 | 225 | 26.5 | 13 | A1305X010007 |
|   | G $\frac{1}{2}$   | G $\frac{1}{2}$    | 25               | St 35.8  | 170             | 130 | 225 | 22.5 | 17 | A1305X010005 |
|   | G $\frac{1}{2}$   | G $\frac{1}{2}$    | 25               | St 35.8  | 170             | 130 | 225 | 22.5 | 17 | A1305X010008 |
|   | without 2)        | G $\frac{1}{2}$ 1) | 25               | St 35.8  | 170             | 130 | 225 | 22.5 | -- | A1305X010006 |
|   | G $\frac{1}{2}$   | G $\frac{1}{2}$ 1) | 160              | St 35.8  | 170             | 130 | 225 | 22.5 | 20 | A1305X010009 |
|   | without 2)        | G $\frac{1}{2}$ 1) | 160              | St 35.8  | 170             | 130 | 225 | 22.5 | -- | A1305X010010 |

1) LH/ RH union to DIN 16 283

2) Prepared for welding

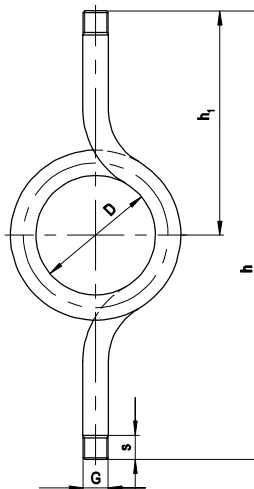
### Dimensions [mm]



| Design<br>Trumpet form<br> | Connection thread |                    | Max. PN<br>[bar] | Material | Dimensions [mm] |     |     |    |    | Article no. |              |
|---|-------------------|--------------------|------------------|----------|-----------------|-----|-----|----|----|-------------|--------------|
|   | Entry 1)          | Gauge side         |                  |          | D               | h   | h1  | l  | r  |             | s            |
| Both side male<br>pipe thread   | G $\frac{1}{4}$   | G $\frac{1}{4}$    | 25               | St 35.8  | 64              | 240 | 120 | -- | -- | 13          | A1305X020006 |
|   | G $\frac{1}{2}$   | G $\frac{1}{2}$    | 25               | St 35.8  | 56              | 240 | 120 | -- | -- | 17          | A1305X020005 |
|   | G $\frac{1}{2}$   | G $\frac{1}{2}$ 1) | 25               | St 35.8  | 56              | 250 | 120 | -- | -- | 17          | A1305X020007 |
|   | G $\frac{1}{2}$   | G $\frac{1}{2}$ 1) | 160              | St 35.8  | 56              | 275 | 120 | -- | -- | 20          | A1305X020008 |

1) LH/ RH union to DIN 16 283

### Dimensions [mm]



Subject to technical alternations