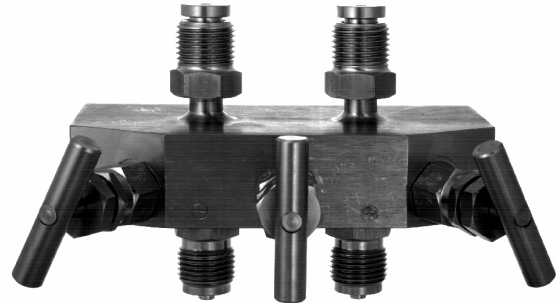


Accessories

Pressure balance- and shut off valves
for differential pressure measuring instruments



Application

Pressure balance- and shut off valves for differential pressure measuring instruments are suitable for liquid and gaseous media, as long as they are not very viscous or crystallizing. Depending upon constructional expenditure and choice of materials they are suitable for nominal pressure PN 40, PN 100 or PN 400.

Pressure balance and stop valves of the nominal pressure PN 100 and PN 400 have double-sided sealing discs. When the valve is fully opened and the seal packings are released, the spindle space is metallically sealed towards the process.

Mode of operation

Properly used pressure balance- and shut off valves avoid an one-sided overload of the gauge during installation, start-up as well as cut off or change of operating process.

Special features

Single valve (flow regulator) enables:

- even pressure load of + and 0 side
- avoidance of one-sided positive pressure load during start and other operating phases
- zero point check in the current operation process

Three-fold valve (flow regulator, two locking off valves), enables beyond that:

- Lock off the process lines without disturbing the operation procedure
- device disassembly, - check, - deactivation
- protection of the differential pressure gauge against undue positive pressure loads
- measuring of the static pressure (after disassembly of the differential pressure gauge).

Five-fold valve (flow regulator, two stop valves, two), enables beyond that:

- one sided or reciprocal ventilation of the differential pressure gauge
- rinse of supply line

Options

- mounting plate for wall assembly
- other process connections
- execution for oxygen
- version for oxygen service

Model: AZA52, AZA57, AZA72

Technical data: Simple and three-fold valve PN 40 copper alloy

Nominal pressure PN: 40 bar
 Nominal size DN: 3.5 mm
 Media temperatures: -20°C to 90°C

Profile- Gasket A1314X020009
 to seal

Wetted parts

Case: Copper alloy
 Spindle and cone: Stainless steel
 Packing: O-Ring NBR

Valve element (replaceable):

Spindle: with fixed single cone (without back seal)
 Spindle thread: wetted
 Handwheel: Thermic protection mass, \varnothing 40mm

Instrument connection

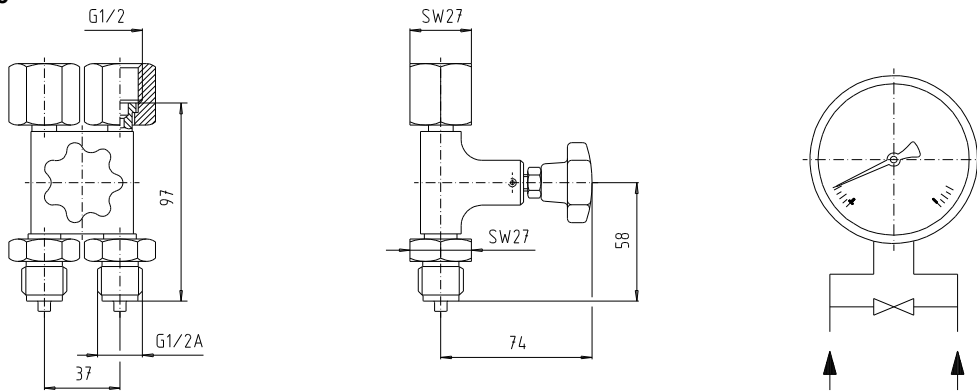
2 x union nut G 1/2

Process connection

2 x spigots in accordance with table 1

Dimensions

Single valve



Three-fold valve

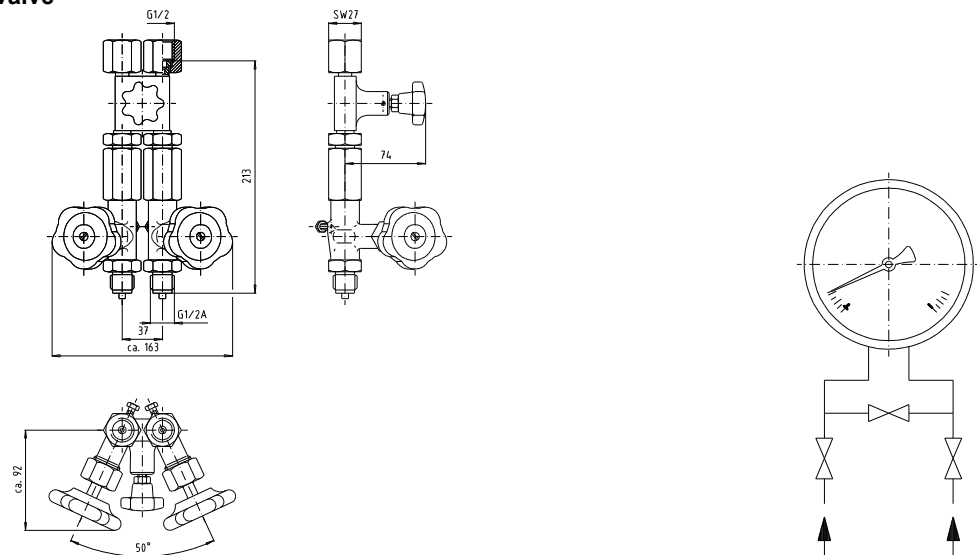


Table 1

Differential pressure gauge	Nominal size	Axle base [mm]	Connection geometry		Article no.	
			Connection of measuring device	Instrument connection	Single valve	Three-fold valve
P2606 - P2617	100 / 160	37	Union nut G 1/2	G 1/2 A	AZA52X003004	AZA57X003007
				1/2 - 14 NPT	-	-
				M 20 x 1.5	-	-

Technical Data: Single-, Threefold- and Fivefoldvalve PN 100 Stainless steel

Nominal pressure PN : 100 bar
 Nominal size DN : 3.5 mm
 Media -temperatures: -20°C to 250 °C

Profil- Gasket AW001X622668(G1/4)
 Profil- Gasket A1314X020008(G1/2)
 to seal

Wetted parts

Case: Stainless steel
 Spindle and cone: Stainless steel
 Packing: PTFE (Teflon)

Valve element (exchangeably)

Spindle: with rotatable double cone
 Spindle thread: not wetted
 clamp handle: Stainless steel, \varnothing 10 x 44 mm

Measuring instrument connection

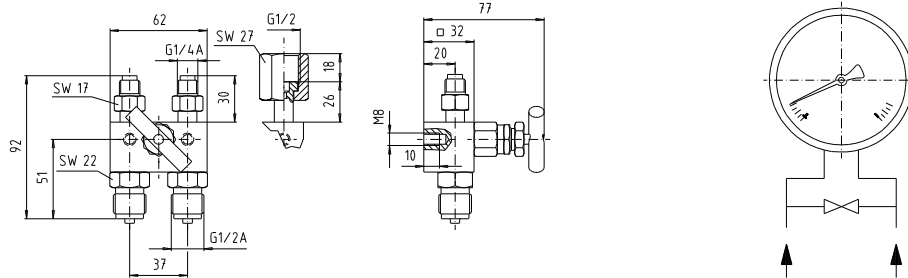
2 x airscrew G 1/2 A other 2x Union nut G1/2

Process connection

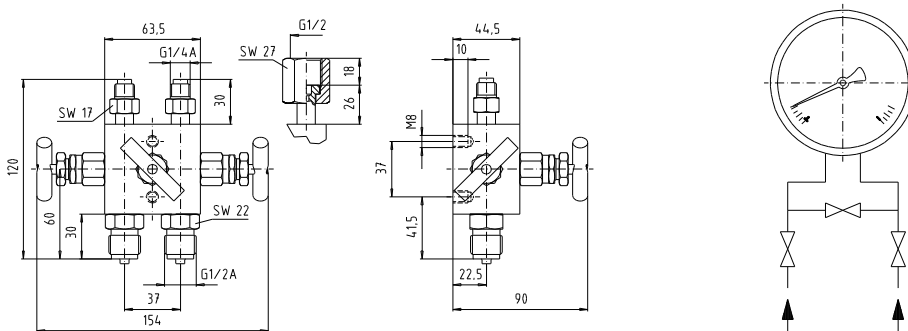
2 x spigot in accordance with table 2

Dimensions

Single valve



Threefold valve



Fivefold valve

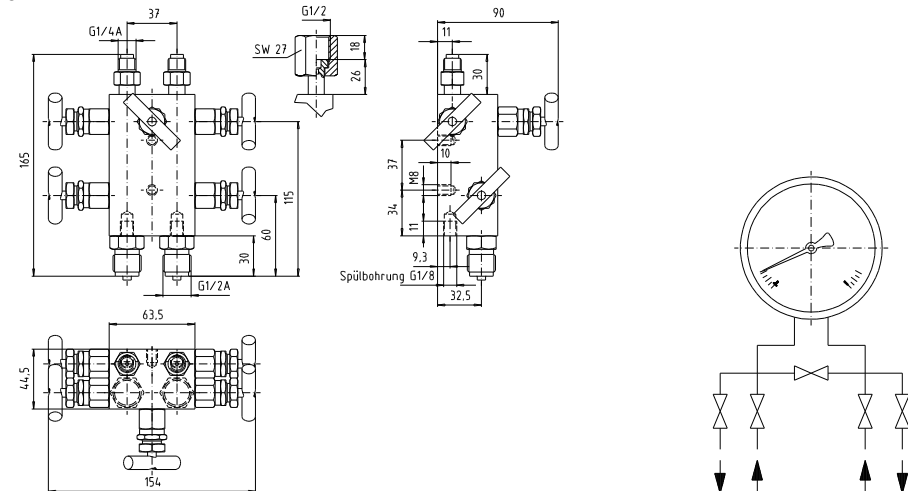


Table2

Differential pressure gauge	Nominal size	Axle base [mm]	Connection geometry		Article no.		
			Connection of measuring device	Process-connection	Single-valve	Threefold-valve	Fivefold-valve
P2606 - P2617	100 / 160	37	Airscrew	G 1/2 A	AZA52X023001	AZA57X023001	AAZA72X023001
			G 1/4 A	1/2 -14 NPT	AZA52X031001	AZA57X031001	--
			Union nut G1/2	M20x1,5	--	AZA57X024001	--
P2700 - P2719			G 1/2	G 1/2 A	AZA52X031001	AZA57X031001	AAZA72.003002
				1/2 -14 NPT	AZA52X011001	AZA57X011001	--

Technical Data: Four-fold PN 60 copper alloy for pressure gauge with pressure spring and diaphragm seal

Nominal pressure PN: 60 bar
 Nominal size DN : 3,5 mm
 Media temperatures: -20°C to 90 °C

Profil gasket:
 cutting ring connection

Wetted parts

Case : copper alloy
 Spindle and cone: Stainless steel
 Packing: O-Ring NBR

Valve element (changeable)

Spindle: with revolable double cone
 Spindle thread: not wetted
 clamp handle:

Instrument connection

2 x tube 6 mm (others on request)

Process connection

2 x female screw thread see table 4

Dimensions

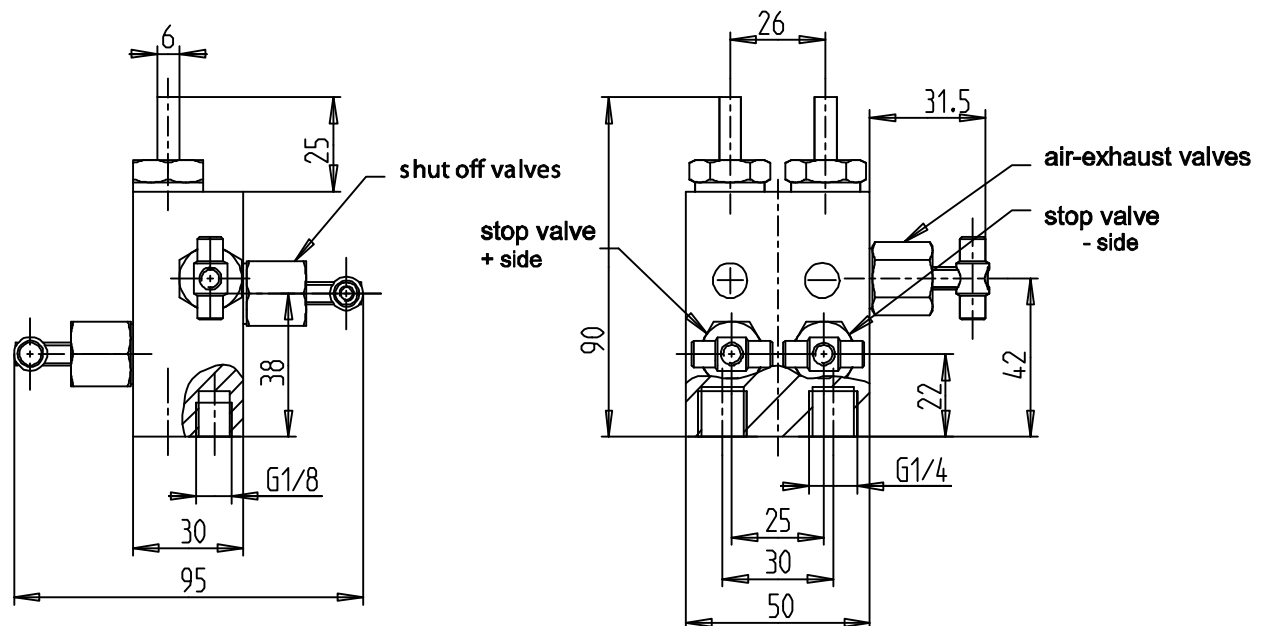


Table 4

Differential pressure gauge model	Nominal size	Axle base [mm]	Connection geometry		Article no.		
			Connection of Measuring device	Instrument connection	Single valvel	Three-fold valve	Five-fold valve
P2590 - P2593	100	26	Cutting ring connection for tube Ø 6 mm	G ¼	--	AZA57X013001	--