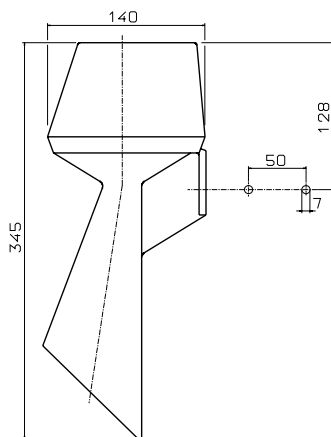


Appliance information

HP ...
HP ... B0
vertical mounting

All-purpose signal horn for dry and moist locations inside as well as for the use outdoors.

Measurements



ATEX-Option **Dust**



for Ex type of protection **Ex II 3D T85 °C IP55**
attach **B0** behind the order code

Technical data

Material	housing	ABS
Colour		grey
Mounting position		vertical
Volume		approx. 110 dB(A), 1m
Ambient temperature		-20 °C ... +40 °C
Supply voltage	06	110 ... 120 V ~ (AC)
	07	220 ... 240 V ~ (AC)
	13	24 V = (DC)
Power consumption		max. 0.3 A
Cyclic duration factor		100 % (continuous operating mode)
Cable entry		cable gland M20x1.5
Type of protection		IP 55 acc. to DIN EN 60529
Maintenance		none
Weight		1.15 kg
Option	B0	II 3D T 85 °C IP55

Order code		Article number
HPW11-06	110 ... 120 V ~	212 251 06
HPW11-07	220 ... 240 V ~	212 251 07
HPW11-13	24 V =	212 251 13

before installation:

Please, read these safety instructions first and take notice of the operating instruction.

Safety instructions

1. The installation, commencement and maintenance may carried out by qualified experts, with electrical knowledges, only.
2. Take notice: the electrical connection has to be made in compliance with the federal, state and local laws and regulations and/or with the VDE 0100.
3. Before electrical connection compare the supply voltage with the data at the data plate and at the connection plan.
4. A fuse with max. 4A must be connected in series to the supply voltage.
5. Only set to work the appliance when it is closed.
6. Turn off the power supply before opening the appliance.



For use in explosion hazardous areas:

7. The installation, maintenance, commencement, removal and repairs has to be supervised and checked from a person which is authorized in explosion protection.
8. The appliance has to be used in areas only, which have been classified as zone 22.
9. To reach the type of protection, the cable gland has to be fitted with an installation torque of min. 2,0 Nm. (approved in accordance with EN 50262 with 3,0 Nm, type of protection IP68, 5 bar 30 - min)
10. Take notice of the demands of DIN EN 50281-1-2, especially referring to deposit of dust and temperatures and concur with the corresponding regulations.
11. For cleaning of the appliance, please use a moist cloth.