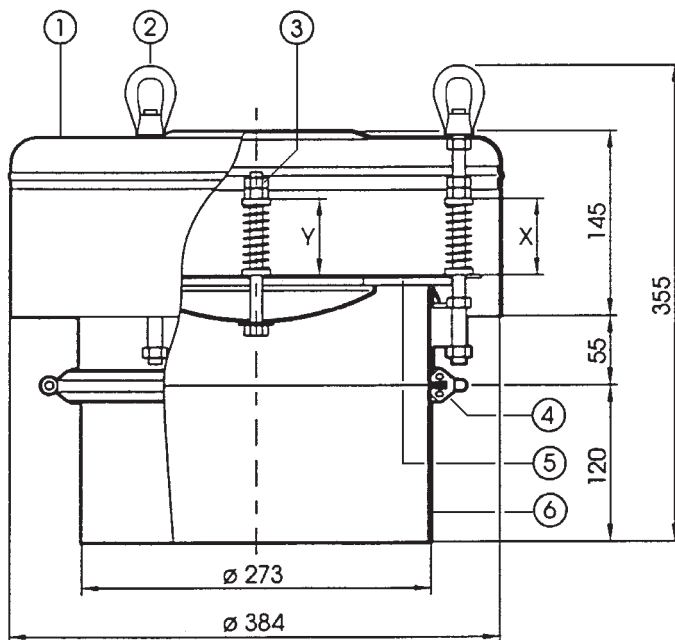


Appliance information

The Silo-Ex-Implo-Valve protects silos and containers from overpressure and low pressure.

SEI-250

Measurements



Use

The Silo-Ex-Implo-Valve has been mounted at the top of silo or container.

It protects against

- pneumatic filling
- sticking of the dust precipitation filter
- fermentation
- temperature variations
- condensation
- high output
- aspiration

Adjustment tables

Overpressure		Low pressure	
X mm	mbar	Y mm	mbar
68	60	50	12
77	50	63	9
88	40	80	5
		92	2

Technical data

Materials	1	cover 1.4401
	2	eyebolt steel, galvanized
	3	screws and nuts 1.4401
	4	profil sealing neoprene, white, food
	5	valve sealing white, food
	6	corpus and valve disc 1.4401

Mounting position vertical

Temperature range -25 °C ... +70 °C

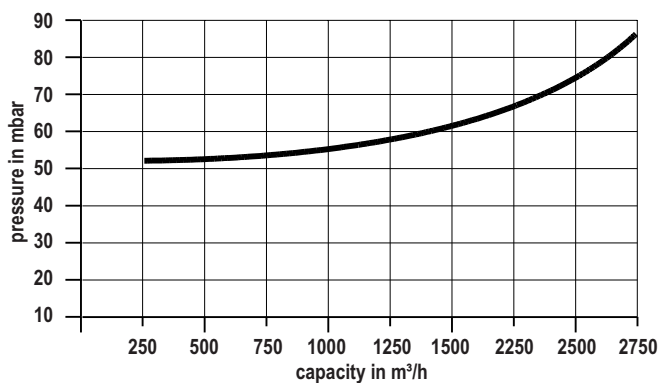
Factory setting

High pressure	50 mbar
Low pressure	2 mbar

max. permissible pressure

High pressure	60 mbar
Low pressure	12 mbar

Curve by overpressure



Curve by low pressure

