

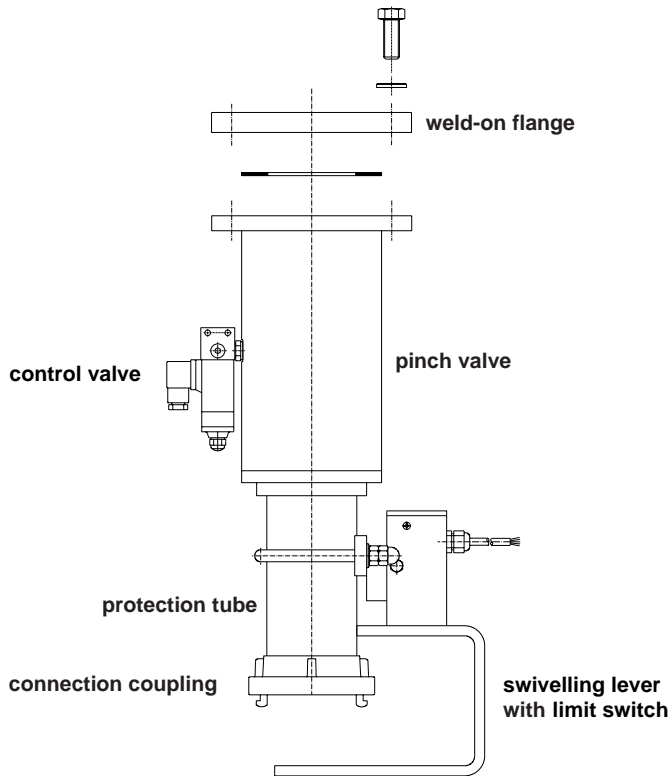


Appliance information

Blocking valve to connect the filling pipe and to shut-off the filling pipe while pneumatic filling process of silos from silo vehicles.

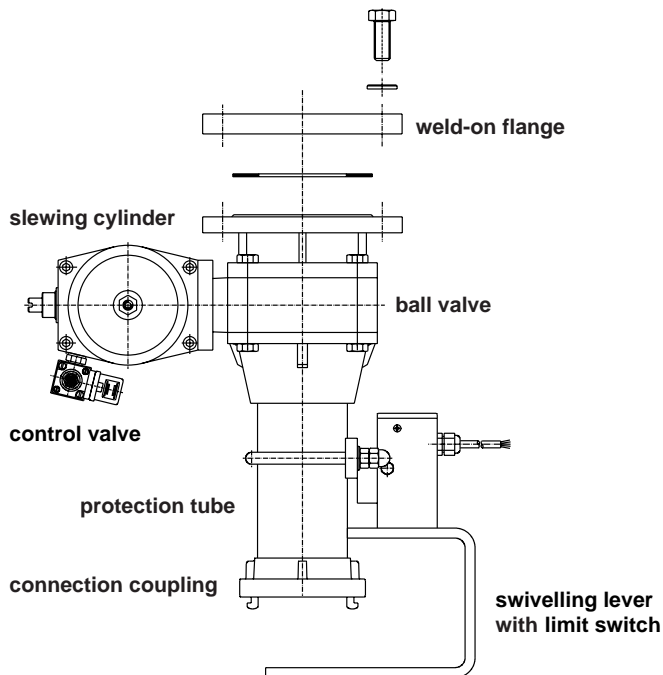
Silo filling device with pinch valve

Type SFA-Q ... DN 65, 80, 100, 125 and 150



Silo filling device with ball valve

Type SFA-K ... DN 80 and 100



Model (features) on customer's request

Term	optional made
Weld-on flange	in steel, galvanized aluminium stainless steel
Pinch valve	inside rubber / hose in caoutchouc, resistant to abrasion caoutchouc, white, food product touching parts in aluminium stainless steel with accessories quick air-exhaust valve compressed air switch for position indication or signal "hose defect"
Ball valve	ball in stainless steel sealings in PTFE/VITON with accessories quick air-exhaust valve limit switch for position indication
Control valve	with supply voltage 230 V AC 110 V AC 24 V AC 24 V DC
Protection tube	in steel, galvanized aluminium stainless steel
Connection coupling	system "Storz" TW coupling DIN 28 450 KAMLOK DIN 2828 Guillemin flange DIN or ANSI flared-tube end (UK) Cardan in aluminium stainless steel brass steel, galvanized (flange, flared-tube end, cardan) with integrated limit switch (no swivelling lever for this model) mechanical inductive inductive NAMUR
Swivelling lever with limit switch	in steel, galvanized stainless steel with mechanical limit switch inductive limit switch inductive limit switch NAMUR